

04IDBB Wide Multi-Deck Island Merchandiser

8' (Deli / Meat) Double End Joints

ELECTRICAL DATA

Case Length	Fans Per Case	High Efficiency Fans		Anti-Condensate Heaters		Defrost Heaters			
		120 Volts		120 Volts		208 Volts		240 Volts	
		Amps	Watts	Amps	Watts	Amps	Watts	Amps	Watts
8'	6	0.70	42.0	0.91	109.0	7.70	1600	8.88	2130

LIGHTING DATA

Case End	Shelf Depth	Lights Per Row	Light Length	Clearvoyant LED Lighting • (Per Light Row)			
				Standard Power (Cornice or Shelf)		High Power (Cornice)	
				120 Volts		120 Volts	
				Amps	Watts	Amps	Watts
8' Double Butt	Top Sill / Shelves	4	4 (4ft)	0.40	47.6	0.72	86.0

GUIDELINES and CONTROL SETTINGS

Application	BTUH/ft •		Superheat Set Point @ Bulb (°F)	Evaporator (°F)	Discharge Air (°F)	Discharge Air Velocity (FPM) •
	Conventional	Parallel				
Meat	1858	1677	6 - 8	17	25	130
Deli	1740	1571	6 - 8	22	28	130

DEFROST CONTROLS

Defrosts Per Day	Run-Off Time (Min)	Electric Defrost		Timed-Off Defrost •		Hot Gas Defrost	
		Fail-Safe (Min)	Termination Temp (°F)	Fail-Safe (Min)	Termination Temp (°F)	Fail-Safe (Min)	Termination Temp (°F)
4	6 - 8	30	47	45	45	26	45

NOTES:

- Listed LED lighting values represent a full row of shelves (including wrap-around ends).
- BTUH/ft notes:
 - Listed BTUH/ft data represent unlighted shelves. For LED lighting, add 9 BTUH/ft per row of lighted shelving. For T8 lighted shelves, see Hillphoenix Bluebook Appendix D for BTUH, amp and watt data.
 - Load data represents the sum of both coils.
- Listed discharge air velocity represents the average velocity at the peak of defrost.
- Temperature and defrost settings listed above are recommended start-up settings. Final operational settings may need to be adjusted for the store conditions in which the case operates.
- The recommended evaporator temperatures may need to be adjusted based on system setup, store conditions, etc. The minimum recommended evaporator temperature is 4°F below the listed evaporator temperature.

Hillphoenix

REVISION: 120501_0000

A DOVER COMPANY

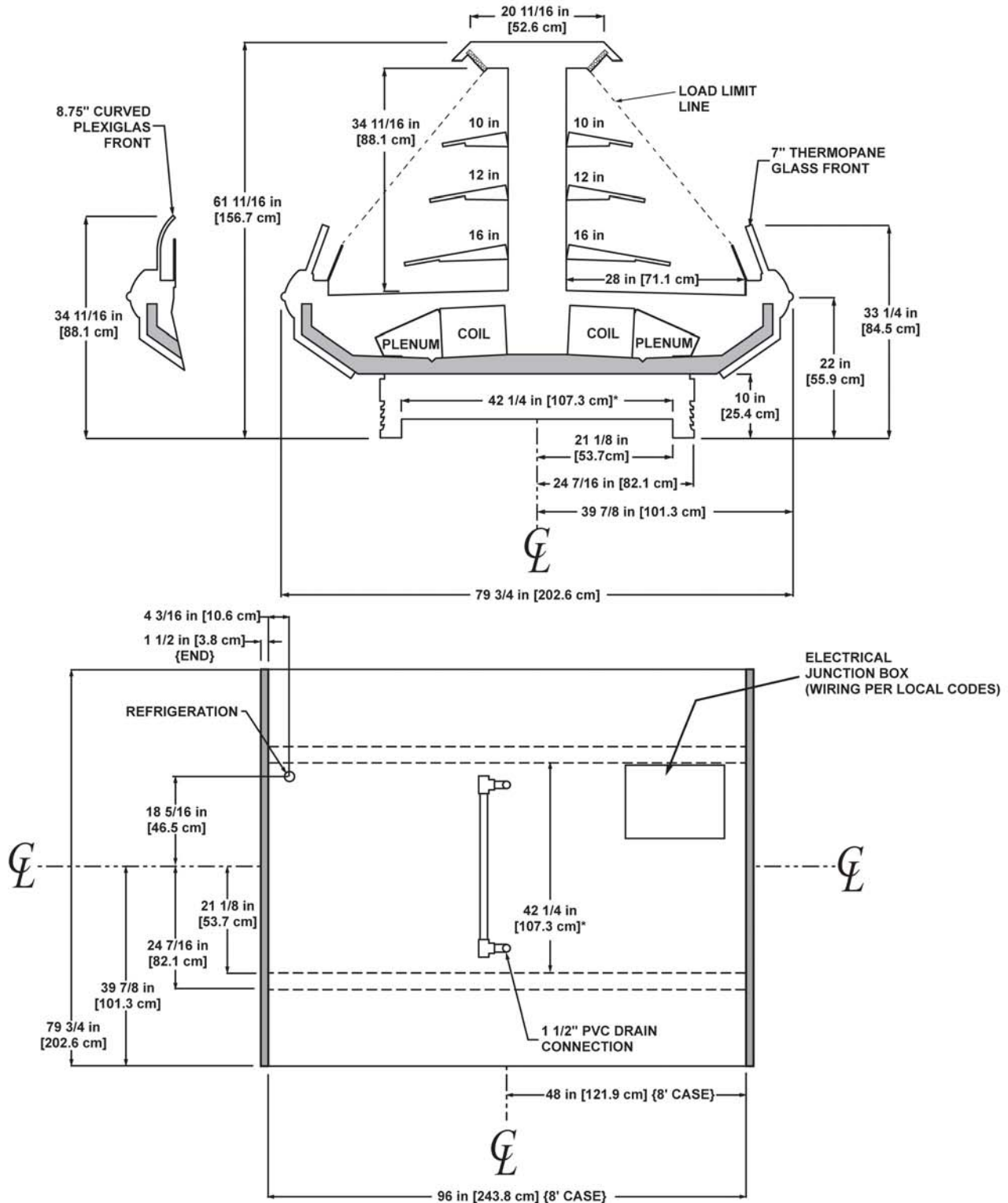


All measurements are taken per ASHRAE - 72 - 2005 specifications. Hillphoenix refrigerated display cases for sale in the United States meet or exceed Department of Energy 2012 energy efficiency requirements.

Defrost Schedule	
Defrosts per Day	Time
1	12 midnight
2	12am - 12pm
3	6am - 2pm - 10pm
4	12am-6am-12pm-6pm
6	12am-4am-8am-12pm-4pm-8pm

04IDBB

Wide Multi-Deck Island Merchandiser 8' (Deli / Meat) Double End Joints



NOTES:

* STUB-UP AREA

- FRONT AND CENTER SILL HEIGHTS VARY WITH BASEFRAME HEIGHT
- SUCTION LINE - 7/8", LIQUID LINE - 3/8"
- AVAILABLE SHELF SIZES: 10", 12", 14" & 16"
- DASHED LINES SIGNIFY AREA INSIDE BASE RAIL BEHIND KICK-PLATE

