

Self-Service Open Multi-Deck Merchandiser

PF 54" REMOTE - 4', 6', 8', 10', & 12'

Electrical Data

Model		Fans per Case	High Efficiency Fans		Anti-Condensate Heaters		Drain Heaters		Optional Defrost Heaters	
			120 Volts		120 Volts		120 Volts		208 Volts	
			Amps	Watts	Amps	Watts	Amps	Watts	Amps	Watts
PF	4'	2	0.6	72	---	---	---	---	---	---
	6'	3	0.9	108	---	---	---	---	---	---
	8'	3	0.9	108	---	---	---	---	---	---
	10'	4	1.2	144	---	---	---	---	---	---
	12'	4	1.2	144	---	---	---	---	---	---

Lighting Data

Model		Lights per Row	Light Length (ft)	Fluorescent Lighting (Per Light Row)		Clearvoyant LED Lighting (Per Light Row)									
				120 Volts			120 Volts			Standard Power (Cornice or Shelf)		High Power (Cornice)			
				Amps	Watts	Maximum Allowable Rows	Amps	Watts	Maximum Allowable Rows	Amps	Watts	Maximum Allowable Rows	Amps	Watts	Maximum Allowable Rows
				PF	4'	1	4	0.27	32.4	5	0.12	14.4	5	0.2	24
6'	2	3	0.34		40.8	5	0.18	21.6	5	0.3	36	5			
8'	2	4	0.47		56.4	5	0.24	28.8	5	0.4	48	5			
10'	2	5	0.61		73.2	5	0.3	36	5	0.5	60	5			
12'	3	4	0.69		82.8	5	0.36	43.2	5	0.6	72	5			

Guidelines & Control Settings (DX)

Model	Conventional ² BTUH/ft	Parallel ³ BTUH/ft	Superheat Set Point @ Bulb (°F)	Evaporator (°F)	Discharge Air (°F)	Discharge Air ⁴ Velocity (FPM)
PF	1004	924	6-8	24	29	200

Defrost Controls

Model	Defrosts per Day	Run-Off Time (min)	Electric Defrost		Timed-Off Defrost		Hot Gas Defrost	
			Fail-Safe (min)	Termination Temp (°F)	Fail-Safe (min)	Termination Temp (°F)	Fail-Safe (min)	Termination Temp (°F)
PF	4	---	---	---	65/ ⁵ 36	42	---	---

1 NOTE: "---" indicates data not applicable.

2,3 Listed BTUH indicates unlighted shelves. Add the following for lighted shelves:

- 4' Fluorescent: 80 BTUH
- 3' Fluorescent: 60 BTUH
- 4' Shelf LED: 36 BTUH
- 4' Canopy LED: 72 BTUH
- 3' Shelf LED: 27 BTUH
- 3' Hi-Output LED: 54 BTUH

4 Average discharge air velocity at peak of defrost.

5 Time-off duration for defrost with no termination control.

Engineered for stores with ambient conditions not to exceed 75° and 55% relative humidity.

Due to engineering improvements specifications may change without notice.

All measurements are taken per ASHRAE - 72 - 2005 specifications.

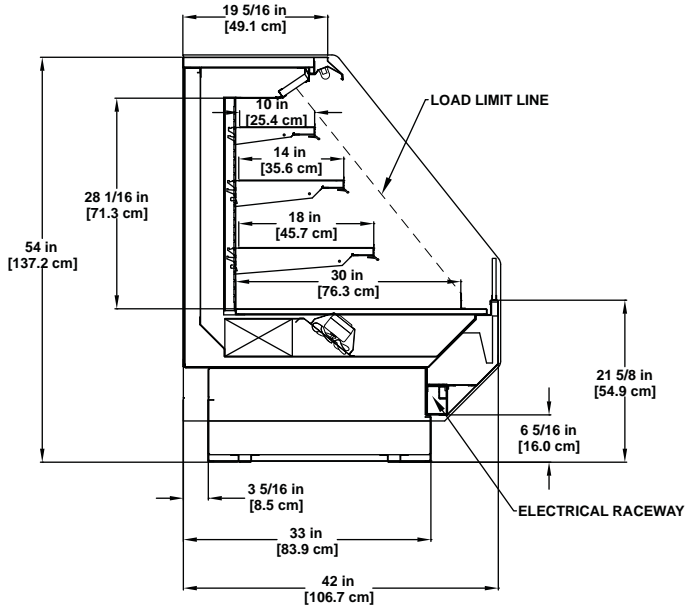
Numbers are based on standard case sizes. Consult engineering.



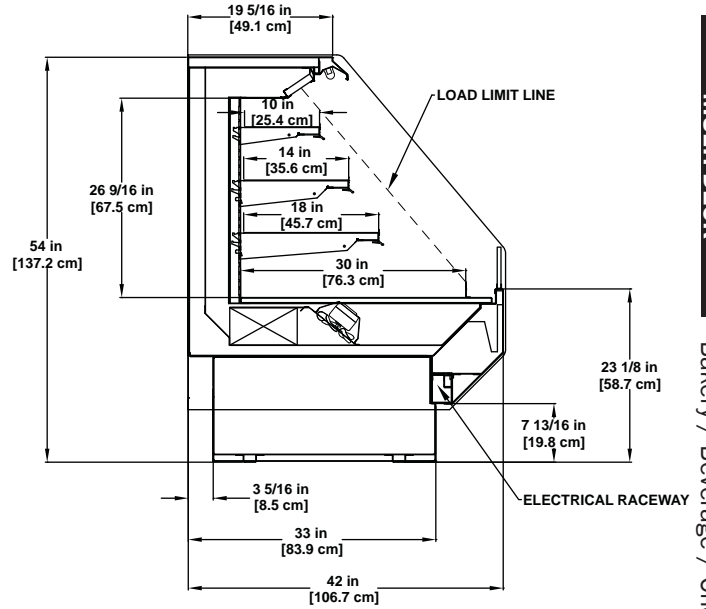
PF
(54" Remote)

Hillphoenix®

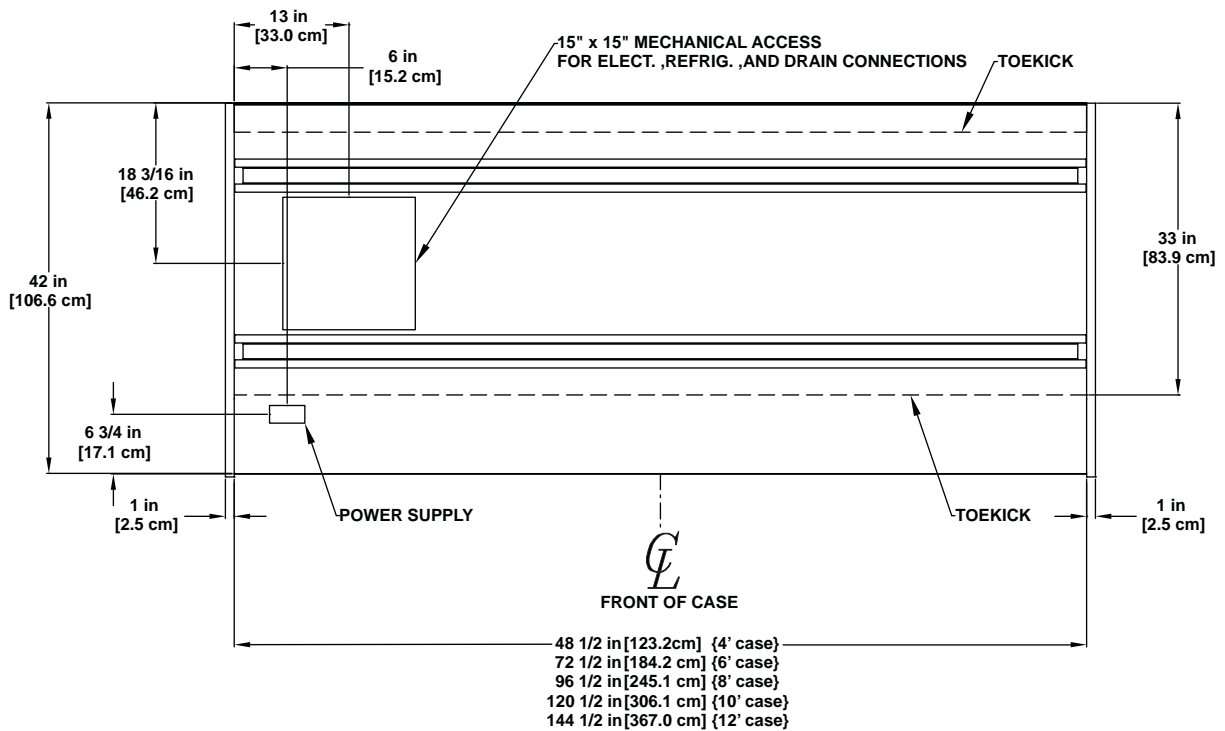
A DOVER COMPANY



6 5/16" TOEKICK



7 13/16" TOEKICK



SELF-SERVICE
MULTI-DECK

Bakery / Beverage / Cheese / Deli / Meat

